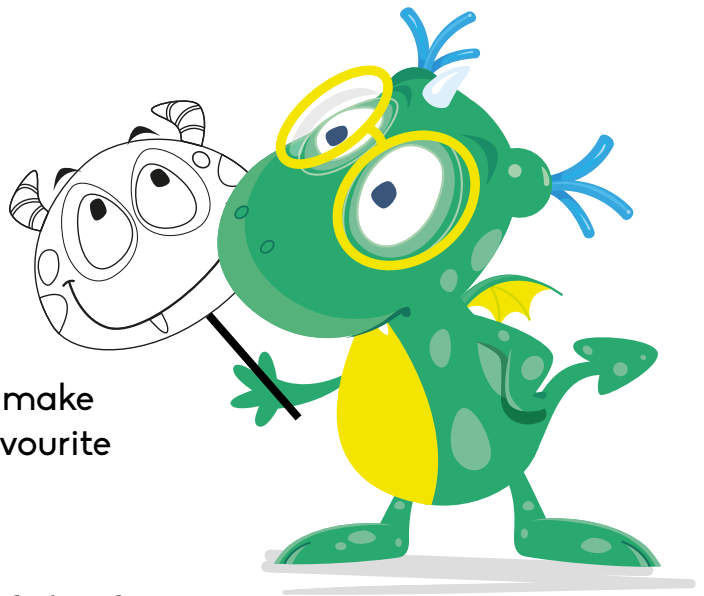


Make a mask

with...

Drago



It's time for another cheeky creation – let's make monster masks so you can become your favourite Cheeky Monster! Here's Drago...

What You Will Need

- A green felt pen
- A pencil
- A sheet of A4 green card
- A sheet of yellow foam
- A sheet of blue foam
- A sheet of light green foam
- A sheet of beige foam
- A sheet of white foam
- Scissors
- Glue stick
- A lolly-pop stick
- Masking tape
- A grown-up helper

What To Do:

1. To start, carefully draw the shape of Drago's head and the outline of her eyes with your pencil and once you are happy with the shape go over it with the green felt pen.
2. Carefully cut around the head outline to get your Drago shape.
3. Now it's time to cut out the eyes, carefully poke the scissors through the center of the eye shape to make a hole and then cut out the eye shape. You should ask your grown-up if you need help you with this.
4. With your pencil, draw out Drago's glasses on the yellow foam, take care to make them the right size to go over her eyes. When you are happy cut out the glasses making sure that they still join in the center, then put to one side.
5. Next step is to draw out both of Drago's hair tufts on the blue foam and cut out, then put to one side.
6. Take the light green foam, draw and cut out two eyebrows, then put to one side.
7. For Drago's spots use the beige colour foam, draw and cut out three different sized spots, then put them to one side.
8. Finally draw and cut out a horn and two teeth from the white foam and you are ready to assemble your Drago mask.
9. Lay out the Drago mask with the foam pieces next to it.



10. Apply a small bit of the glue stick between the cut out eyes and then carefully stick down the center of the glasses. You can then put more glue around the frames to get the glasses to hold firmly.
11. Put a little bit of glue on the eyebrows and stick them in place above the glasses.
12. Next apply glue to the spots and place them on Drago's face. The horn can also be stuck down at the top between the eyebrows.
13. For the next part you will need to turn your mask over.
14. The hair tufts and teeth are to be stuck the reverse side of the mask, make sure you have them peeking over the edge.
15. Turn the mask back over and with your green felt pen draw on two circles for Drago's nose, make sure to position them between the teeth that are poking down.
16. Finally turn the mask over again and with a small piece of masking tape stick the lollypop stick in place for your mask holder and you are ready to play.

Experiment ideas:

- Have a go at making all the Cheeky Monster masks and then create your own Cheeky Monster show with your friends and family!

